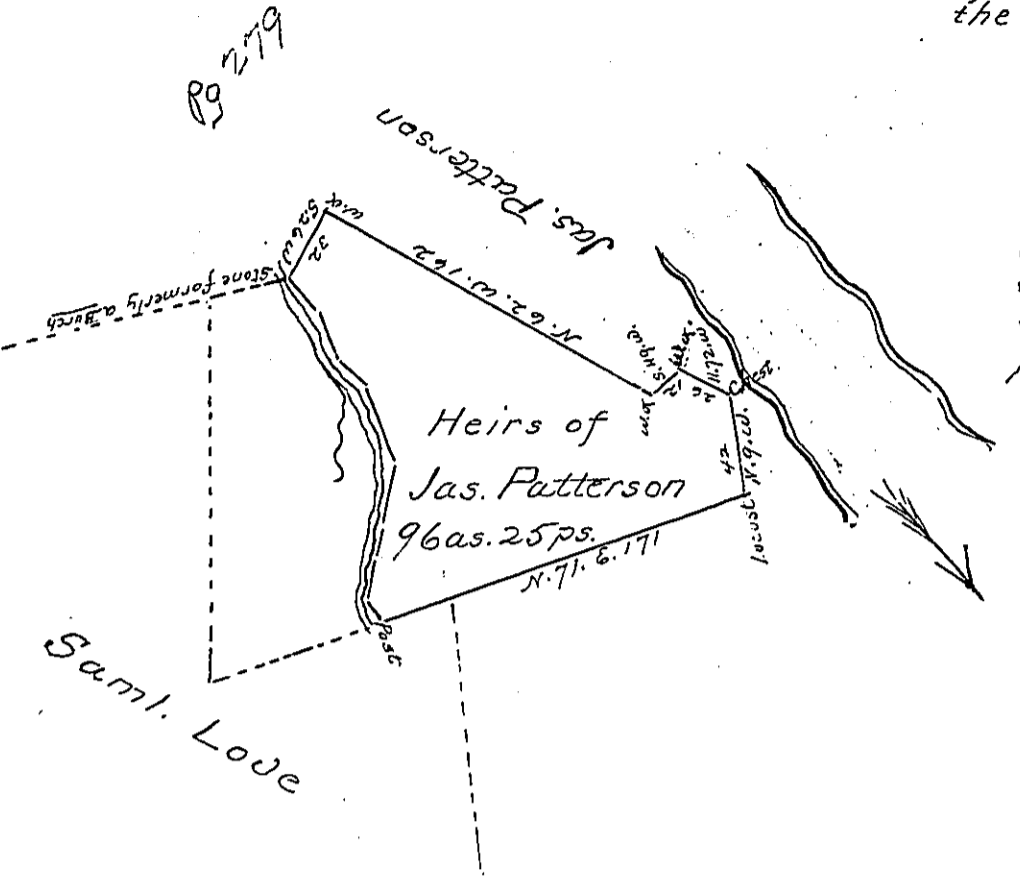


The courses and distances of the division line from the stone formerly a Burch.



- S. 45 3/4 E - 20 ps.
- S. 22 1/4 E - 20
- S. 43 1/4 E - 17
- S. 22 1/2 E - 32
- S. 10 W - 32
- S. 4 W - 14
- S. 15 W - 17
- S. 9 E - 9 ps. to the Post on the south line

Situate in Wain Township Lycoming County Surveyd on the 26th day of Novr. 1817 at the request of the present claimant it being a part of a tract Surveyd to Robert Love by virtue of his Warrant dated the 15th. of October 1784

David W. Macker D.S.

To Jacob Spangler Esqr.)
Surveyor General }

IN TESTIMONY that the above is a copy of the original remaining on file in the Department of Internal Affairs of Pennsylvania, made conformably to an Act of Assembly approved the 16th day of February, 1833, I have hereunto set my Hand and caused the Seal of said Department to be affixed at Harrisburg, this second day of September 1902

James W. Fatta
Secretary of Internal Affairs.